



JAMSTEC/IODP

©Yokohama Hakkeijima Seaparadise

YOKOHAMA —an Ocean Hub

A hub of ocean-related activities

Since the opening of its port, Yokohama has developed through its connection with the ocean, whose presence is closely felt by citizens.

We aim to make Yokohama a hub of ocean-related activities by taking advantage of the numerous companies, research institutions and other marine-related entities based in the city.



Sail Training Ship NIPPON MARU
National Important Cultural Property



Cutter Suction Dredger ASIA MARU No.3
TOA Corporation



Autonomous Underwater Vehicle (AUV) /
Maki Laboratory, Institute of
Industrial Science, The University of Tokyo



Yokohama's Goals as an Ocean Hub

- **Becoming a hub of marine industry activities** in Japan and drawing human resources in a range of marine sectors.
- **Becoming a city that brings the diverse potential of the ocean into everyday life**, as well as the connection between the ocean and people, through a wide range of opportunities such as learning about and experiencing the latest marine initiatives and research results.

Yokohama Ocean Association

An industrial-government-academic platform made up of Japan's leading marine-sector companies and research institutions, this association is engaged in industry promotion, specialized personnel training, children's education and enhancing public awareness.

Members: 31 (as of April 2026)

Research Organizations

- Japan Agency for Marine-Earth Science and Technology (JAMSTEC)
- Japan Fisheries Research and Education Agency
- National Institute of Maritime, Port and Aviation Technology (National Maritime Research Institute, Port and Airport Research Institute)

Educational Institutions

- Yokohama National University
- Tokyo University of Marine Science and Technology (TUMSAT)
- Yokohama City University
- Kanagawa University
- Institute of Industrial Science, the University of Tokyo
- Japan Agency of Maritime Education and Training for Seafarers (JMETS)

Governmental Entities

- National Ocean Policy Secretariat, Cabinet Office
- Kanto Regional Development Bureau, MLIT
- Kanto District Transport Bureau, MLIT
- City of Yokohama

Companies/Related organizations

- TOA Corporation
- Yokohama Port Corporation
- Yokohama Hakkeijima
- NYK Line
- Mitsubishi Heavy Industries
- Japan Marine United Corporation
- PENTA-OCEAN CONSTRUCTION
- Engineering Advancement Association of Japan
- Promotion and Research Institute for Ocean Economics
- Japan Ship Machinery and Equipment Association
- Japan Project-Industry Council (JAPIC)
- Port of Yokohama Promotion Association
- Japan Society of Next Generation Sensor Technology
- Japan Underwater Drone Association
- Actindi
- Informa Markets Japan
- Yokohama Engineering Works
- PwC Consulting

Industry Promotion/ Specialized Personnel Training

OXExpo

(Ocean Transformation Exhibition)
Hosting Umi-Con, the core symposium of OXExpo



Personnel training

(Seminar on Careers Related to the Sea, etc.)



MICE attraction

Children's Education/ Enhancing Public Awareness

Yokohama Ocean Hub Sea Expo



Education Programs

(Classes/facility tours/ workplace experiences etc/ for elementary and junior high school students)

Port of Yokohama's future vision for a "Carbon Neutral Port"

Aiming to decarbonize and upgrade its port, the City of Yokohama is promoting the Carbon Neutral Port Initiative by making use of the port's strengths and the benefits the ocean brings to society. In addition, we aim to make Yokohama a center for marine-related activities: "Yokohama Ocean Hub".



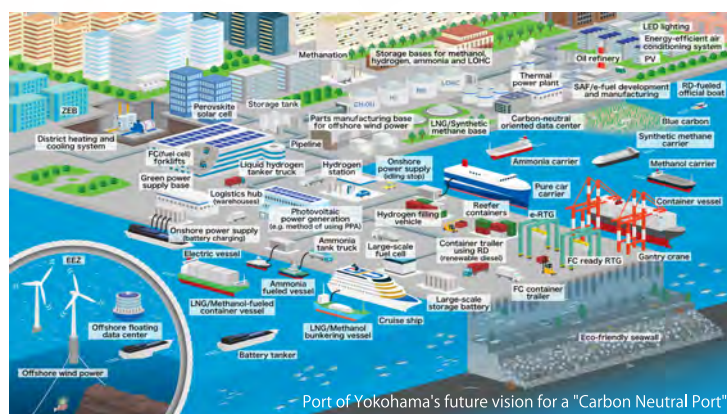
Yokohama-An Ocean Hub



Yokohama-Carbon Neutral Port



MDA Situational Indication Linkages



Port of Yokohama's future vision for a "Carbon Neutral Port"

Policy Coordination Division, Port and Harbor Bureau, City of Yokohama (Yokohama Ocean Association Office)

6-50-10 Hon-cho, Naka-ku, Yokohama 231-0005 Japan TEL: +81-45-671-7165

E-mail: kw-y-oceanhub@city.yokohama.lg.jp

<https://www.y-oceanhub.org>



This printed material is classified as Recyclable Grade A.

Created April 2026